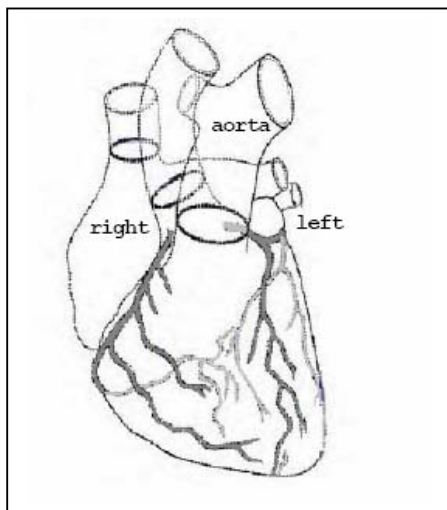


PATIENT INFORMATION SHEET

CORONARY ANGIOGRAPHY

CONDITION

Fat (cholesterol) and calcium can build up in the arteries like rust in old pipes. It can stop the flow of blood to the heart. This can cause angina or a heart attack.



Right and left coronary arteries arising from the aorta

PROCEDURE

This procedure is performed to show up the amount of disease in the coronary arteries, the blood vessels that supply the heart with blood. After an injection of local anaesthetic, a fine tube (catheter) is put into the artery in the groin. The tube is carefully passed into each coronary artery in turn.

A series of video pictures are taken using x-rays and a contrast medium (x-ray dye).

The contrast medium may be injected into the main pumping chamber of the heart (left ventricle). This is to measure the size of the heart and how well it is pumping.

These pictures give us a map of the coronary arteries. This helps us to find out whether you have any narrowing or blockage of your coronary arteries.

We can then tell you which treatment is best for you. This may be an operation such as a coronary by-pass or a procedure called an angioplasty (the arteries are widened using a small sausage - shaped balloon). Sometimes, drugs alone may be a suitable option.

RISKS OF THIS PROCEDURE

The risks of coronary angiography depends on:

- how bad your coronary artery disease is
- how well your heart is pumping
- how old you are
- your general health
- how healthy your organs are

and are higher if you have had previous bypass surgery.

These are some of the more serious risks that can happen, but are not the only risks:

Less than 1 in 10,000 people

(a) Skin injury from radiation, causing reddening of the skin

1 in 1000 people

(b) A stroke. This can cause paralysis and long term disability.

(c) Heart attack.

(d) A dangerous reaction to the x-ray contrast medium (dye). If this happens, you may have severe reactions such as asthma, shock and convulsions. Death in extremely rare cases - about 1 in 250,000 to 400,000 injections.

(e) Need for major surgery to the leg at the puncture site.

(f) Need for emergency heart surgery or angioplasty.

(g) A higher lifetime risk from x-ray exposure.

(h) Death

1 in 100 people

(i) The heart may not beat in a proper rhythm which will need urgent treatment.

(j) Surgical repair of the groin puncture site. This may need a longer stay in hospital.

(k) Minor reaction to contrast medium such as hives.

(l) Loss of kidney function due to the contrast medium

1 in 20 people

(m) Major bruising or swelling at the groin puncture site

Most people

(n) Minor bruising

Continued over page

